

# Rings and Jewelry Laser Marking Machine

Model: P4008



# Product Focus

When it comes to rings and jewelry, there is no doubt, these are part of our outfit and daily life. Jewelry makes us feel stylish and beautiful, but it is also a promise or a symbol of love and fidelity. People have different preferences for a ring, bracelet, pendant or brooch. Couples love to mark their names or special dates on rings and jewelry. People who go for fashion often need to mark special letters or patterns. Therefore, the demand for a laser marking machine is becoming higher and higher in jewelry business. Using such machine is not only practical, it follows the today's wishes and trends.



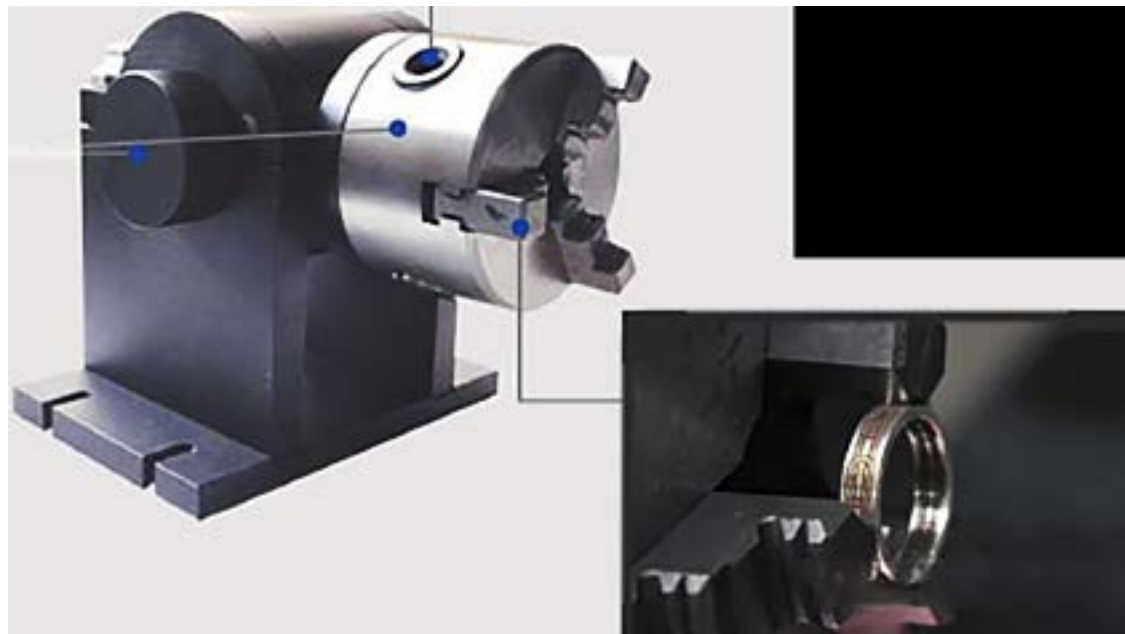
# Rotary Fixture

The fiber laser marking machine is especially developed for jewelry marking. And because here the job quality needs extreme accuracy, the digital performance brings far higher preciseness than the traditional hand work. In addition, here are few *optionally* developed items:

## Rotary fixture for inside marking of rings

Tools to control the diameter of the ring or cylinder object

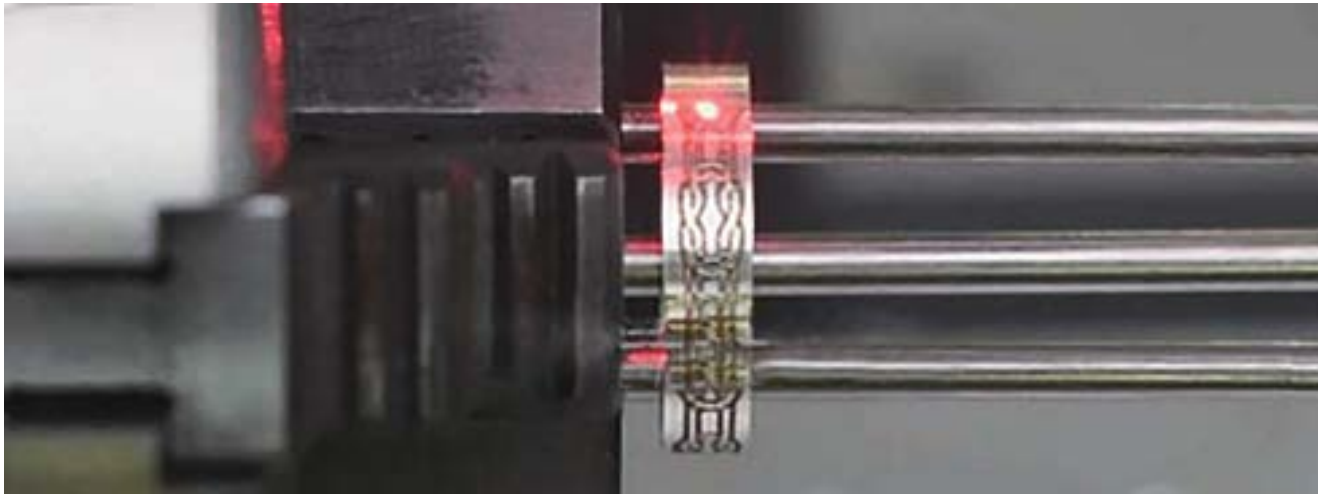
180-degree angle rotary control button



Jaws to fix the ring

## How to engrave the outside of a ring?

Just change to another type of the fixture claws with the extra steel needle to hold rings.



## How to mark letters inside of the ring?

With the special rotary accessory you can fix the ring for inside marking. The laser software supports rotary engraving by easily setting the parameters. Just position it at an angle under the laser head, the laser beam will hit the inside of the ring to mark names, patterns, numbers.



## Fiber Laser

Multiple operating wavelengths, ultra-low amplitude noise, high stability and super-long lifetime.



## Digital Galvanometer Laser Scanning Head

A wide selection of operating wavelengths, ultra-low amplitude noise, high stability and endless lifetime.



# Control System

EZ-CAD control system with stable performance and high reliability.



More than 10,000 sets of equipment are using EZ-CAD control card, shield-utilizing part of complex functions, ensuring higher stability.

# Overall Characteristics

- **Ideal Marking Results**

This machine produces perfect prints on tiny surfaces, excellent and precise.

## **High-Rate of Electrical/ Optical Conversion**

No power coupling loss, low operating costs, 100,000 hours laser lifetime, maintenance-free, no consumables.

## **Red Light Pointer**

Shows the laser path for comfortable job visibility.

## **High Speed Ruler scale**

Helps adjusting height position of various marking objects. Provides effectiveness and profitability of work.

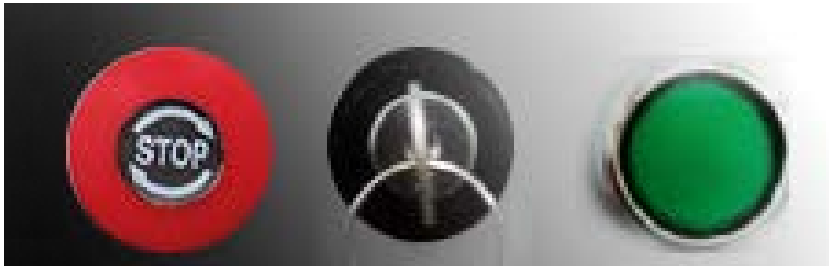


## Machine Operation

Emergency Stop

Key Switch

Main Switch



## Machine compliance

CE, FDA, ISO standards

## Warranty

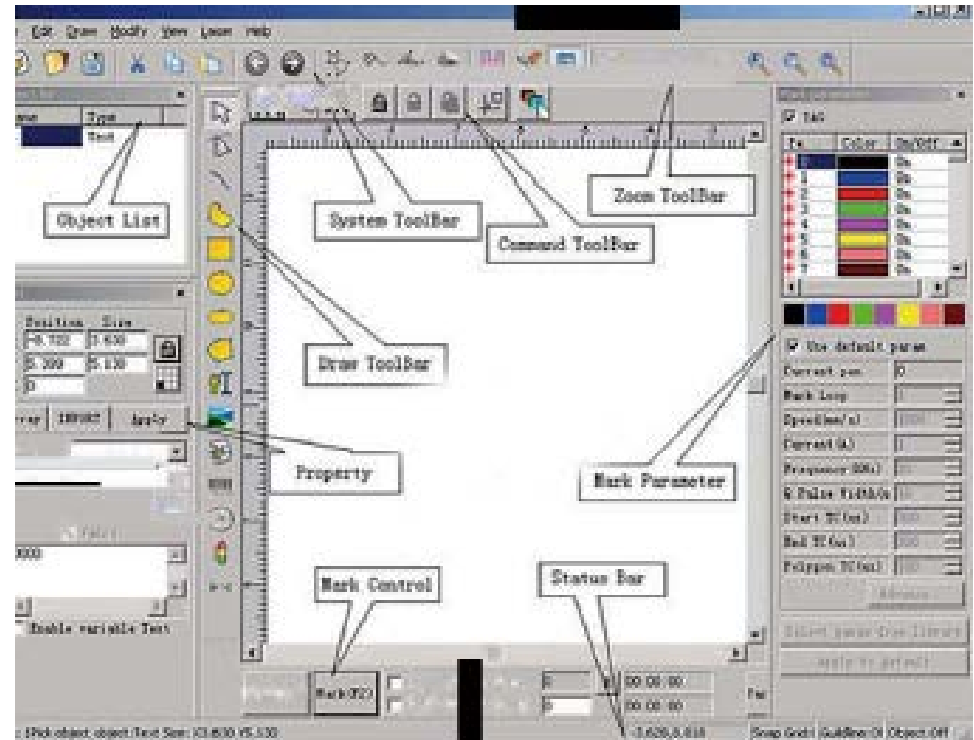
2 Years

/except consumable parts, at  
instructions compliant operation/

## Software

Get the machine with the latest version  
laser marking software.

More than 10 years development, profound  
technical characteristics.



## Cabinet for safe operation

The perfectly enclosed cabinet helps to protect the operators' eyes, restricting from directly viewing the laser beam. The complete job processing, cutting, engraving or marking, is finished in an entirely closed space. The laser goes on only when the cabinet is closed. This option provides safety in any working environment.

Working in a cabinet helps to save maximal amount of silver and gold powder during marking. The gold and silver powder remaining in the protection cabinet is easy to clean down for further utilization.



## Rings are made of silver or gold, how to save the powder?



Use the *automatic powder absorbing device*, developed to serve purifying.

Gold and silver powder produced during work will be absorbed into a filter cartridge.

After processing, the gold and silver powder can be extracted from the filter cartridge by fire thus eliminating waste of these expensive metal particles.

## Production facilities



All machines are assembled in China according to CE, FDA, ISO standards